

Barchart.com - Technical Indicators - Weekly Nearest Futures Reports

As of: 022803		GCU03	SIH03	HGH03	PLJ03	PAH03	ALH03
High		359.0	471.3	79.60	675.0	254.00	0.6810
Low		346.1	454.0	77.25	659.0	240.50	0.6715
Settle		350.2	458.5	77.50	672.5	242.20	0.6715
Change		-1.6	-7.8	-0.15	+13.5	-8.30	+0.0050
4-Week High		388.9	491.1	79.60	694.0	275.00	0.6810
4-Week Low		342.0	450.3	73.85	642.5	240.50	0.6545
5-Year High		388.9	666.0	93.40	800.0	1090.00	0.7805i
5-Year Low		252.5	402.6	60.40	332.0	229.70	0.5955i
Pivot	R2	364.6	478.5	80.46	684.8	259.06	0.6841
Analysis	R1	357.4	468.5	78.98	678.6	250.63	0.6778
	Pivot	351.7	461.2	78.11	668.8	245.56	0.6746
	S1	344.5	451.2	76.63	662.6	237.13	0.6683
	S2	338.8	443.9	75.76	652.8	232.06	0.6651
Moving	4-Week	355.9	460.6	76.70	670.0	249.30	0.6645
Averages	9-Week	358.0	474.4	76.06	649.5	254.89	0.6600
	18-Week	342.8	466.2	74.22	619.7	260.76	0.6546
	40-Week	328.2	466.2	72.24	583.7	296.60	0.6426
*Price cross	4-W	351.3	459.3	76.88	668.8	248.90	0.6646
with MA at	5-W	355.9	460.6	76.70	670.0	249.30	0.6645
	9-W	358.9	472.6	76.49	654.3	256.56	0.6625
	10-W	358.0	474.4	76.06	649.5	254.89	0.6600
	18-W	344.2	467.2	74.33	622.2	257.88	0.6550
	40-W	328.2	465.2	72.14	584.7	295.30	0.6422
*MA cross at	4-9W	400.1	544.6	74.35	576.2	297.94	0.6512
price of	4-18W	316.8	497.9	64.49	442.4	292.53	0.6180
	4-40W	251.5	485.0	56.33	304.2	449.97	0.5673
	9-18W	108.5	381.4	39.85	108.0	279.00	0.5350
	9-40W	11.7	389.1	27.26	-134.5	695.18	0.4319
	18-40W	-164.1	403.0	4.37	-575.3	1451.88	0.2445
RSI	9-Week RSI	55.1	44.9	62.2	72.9	35.0	64.0
*Price for	80%	398.0	595.2	88.02	705.8	401.72	0.7174
*RSI-9 of	20%	282.8	361.5	52.51	424.7	189.18	0.5448
	14-Week RSI	59.2	47.4	60.2	70.5	34.9	61.3
*Price for	80%	415.4	658.8	96.42	744.1	506.19	0.7566
*RSI-14 of	20%	227.4	289.7	39.12	291.9	155.12	0.4832
	20-Week RSI	60.3	48.7	58.1	67.9	35.1	58.3
*Price for	80%	440.5	735.0	107.94	805.5	643.76	0.8202
*RSI-20 of	20%	165.9	204.8	24.51	147.0	107.44	0.4098
Stochastics							
9-Week	Raw	19.2	20.1	80.1	78.1	23.7	76.3
	%K	42.3	36.8	78.1	79.5	41.6	67.0
	%D	63.2	52.8	75.6	82.5	45.7	64.9
*%K %D cross		391.1	484.9	77.61	684.1	259.00	0.6642
*%K %D at cross		63.2	52.8	75.6	82.5	45.7	64.9
14-Week	Raw	47.3	36.2	80.1	81.1	27.6	76.3
	%K	60.3	49.8	79.1	81.6	30.5	69.0
	%D	73.1	62.2	78.4	84.7	29.0	70.5
*%K %D cross		388.0	484.5	77.19	683.8	241.47	0.6701
*%K %D at cross		73.1	62.2	78.4	84.7	29.0	70.5
20-Week	Raw	51.1	46.8	83.8	83.3	13.2	81.0
	%K	63.2	58.6	83.4	83.8	19.7	77.6
	%D	75.3	67.5	81.6	86.9	20.9	78.1
*%K %D cross		388.4	482.8	77.23	684.8	251.79	0.6709
*%K %D at cross		75.3	67.5	81.6	86.9	20.9	78.1
Momentum	4-Week	-18.1	-26.8	-1.65	+13.6	-16.80	-0.0045
	9-Week	+1.0	-12.7	+7.55	+78.4	+3.45	+0.0255
	10-Week	+9.7	-4.5	+6.40	+86.0	+12.50	+0.0240
	18-Week	+36.8	+18.6	+6.45	+70.7	-69.20	+0.0325
	20-Week	+33.9	+27.7	+9.70	+80.4	-79.20	+0.0405
	40-Week	+29.8	-27.2	+4.00	+135.0	-108.80	+0.0330

i = indicates insufficient data

* prices indicated apply only for next trading session

<http://www.barchart.com>

AS OF: 02/28/03

GOLD - COMEX WEEKLY NEAREST FUTURES

EACH GRID = 5.0
VALUE = \$500

\$/TROY
ONZE

420

410

400

390

380

370

360

350

340

330

320

310

300

290

280

270

260

250

240

230

220

210

200

190

180

170

160

150

140

130

120

110

100

90

80

70

60

50

40

30

20

10

0

10000

20000

30000

40000

50000

60000

70000

80000

90000

100000

110000

120000

130000

140000

150000

160000

170000

180000

190000

200000

210000

220000

230000

240000

250000

260000

270000

280000

290000

300000

310000

320000

330000

340000

350000

360000

370000

380000

390000

400000

410000

420000

430000

440000

450000

460000

470000

480000

490000

500000

510000

520000

530000

540000

550000

560000

570000

580000

590000

600000

610000

620000

630000

640000

650000

660000

670000

680000

690000

700000

710000

720000

730000

740000

750000

760000

770000

780000

790000

800000

810000

820000

830000

840000

850000

860000

870000

880000

890000

900000

910000

920000

930000

940000

950000

960000

970000

980000

990000

1000000

1010000

1020000

1030000

1040000

1050000

1060000

1070000

1080000

1090000

1100000

1110000

1120000

1130000

1140000

1150000

1160000

1170000

1180000

1190000

1200000

1210000

1220000

1230000

1240000

1250000

1260000

1270000

1280000

1290000

1300000

1310000

1320000

1330000

1340000

1350000

1360000

1370000

1380000

1390000

1400000

1410000

1420000

1430000

1440000

1450000

1460000

1470000

1480000

1490000

1500000

1510000

1520000

1530000

1540000

1550000

1560000

1570000

1580000

1590000

1600000

1610000

1620000

1630000

1640000

1650000

1660000

1670000

1680000

1690000

1700000

1710000

1720000

1730000

1740000

1750000

1760000

1770000

1780000

1790000

1800000

1810000

1820000

1830000

1840000

1850000

1860000

1870000

1880000

1890000

1900000

1910000

1920000

1930000

1940000

1950000

1960000

1970000

1980000

1990000

2000000

2010000

2020000

2030000

2040000

2050000

2060000

2070000

2080000

2090000

2100000

2110000

2120000

2130000

2140000

2150000

2160000

2170000

2180000

2190000

2200000

2210000

2220000

2230000

2240000

2250000

2260000

2270000

2280000

2290000

2300000

2310000

2320000

2330000

2340000

2350000

2360000

2370000

2380000

2390000

2400000

2410000

2420000

2430000

2440000

2450000

2460000

2470000

2480000

2490000

2500000

2510000

2520000

2530000

2540000

2550000

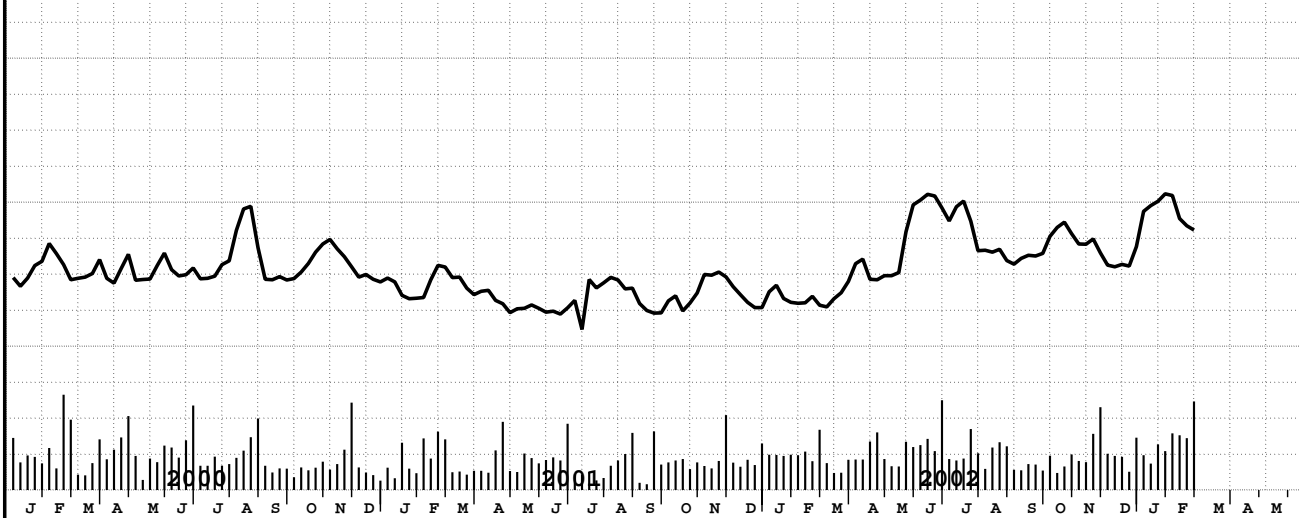
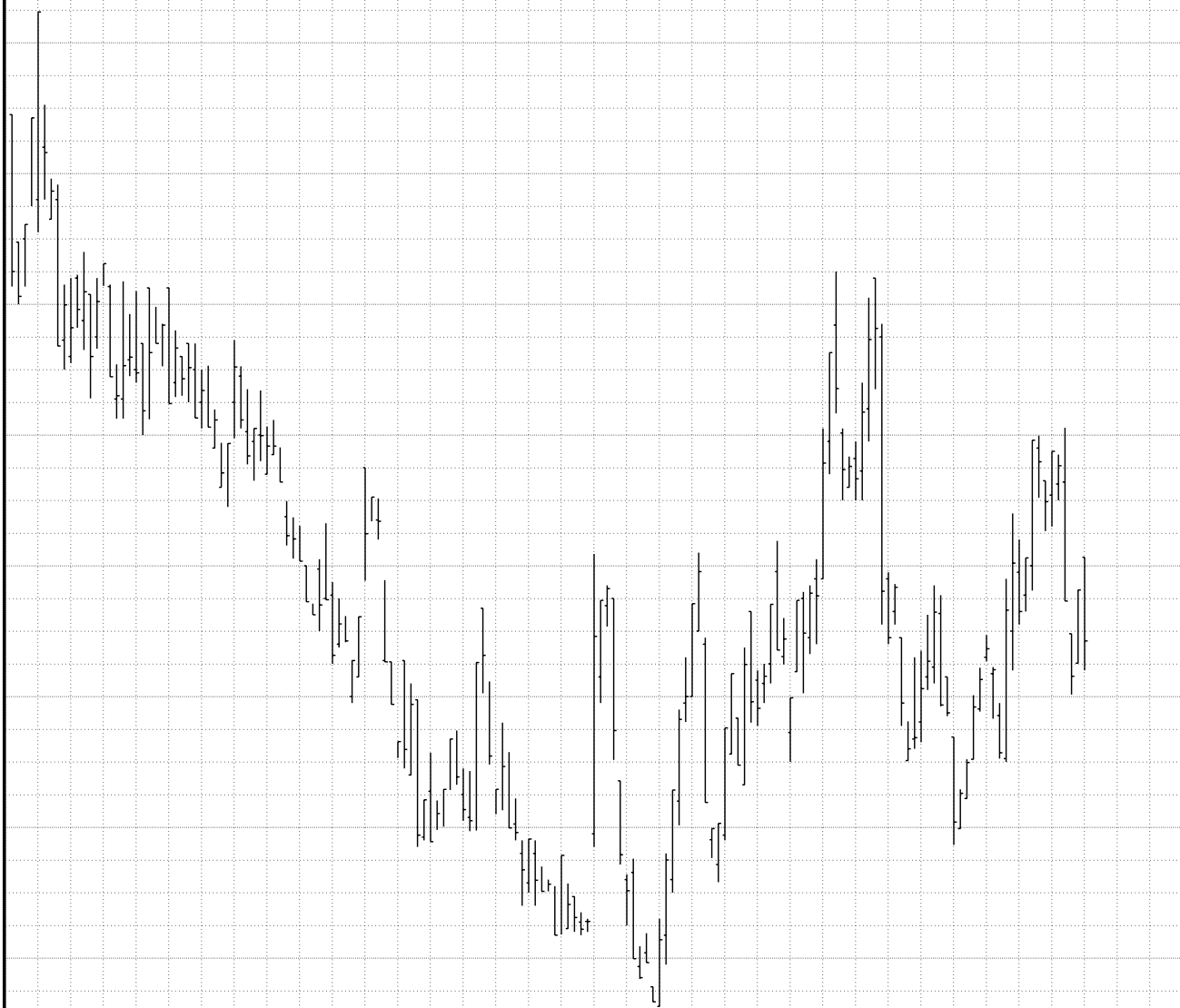
2560000

AS OF: 02/28/03

SILVER - COMEX WEEKLY NEAREST FUTURES

¢/TROY
ONZE
EACH GRID = 5.0
VALUE = \$250

580
570
560
550
540
530
520
510
500
490
480
470
460
450
440
430
420
410
400
390
VOL & O.I.
125000
100000
75000
50000
25000



J F M A M J J A S O N D J F M A M J J A S O N D J F M A M J J A S O N D J F M A M

HIGH GRADE COPPER - COMEX
WEEKLY NEAREST FUTURES

AS OF: 02/28/03

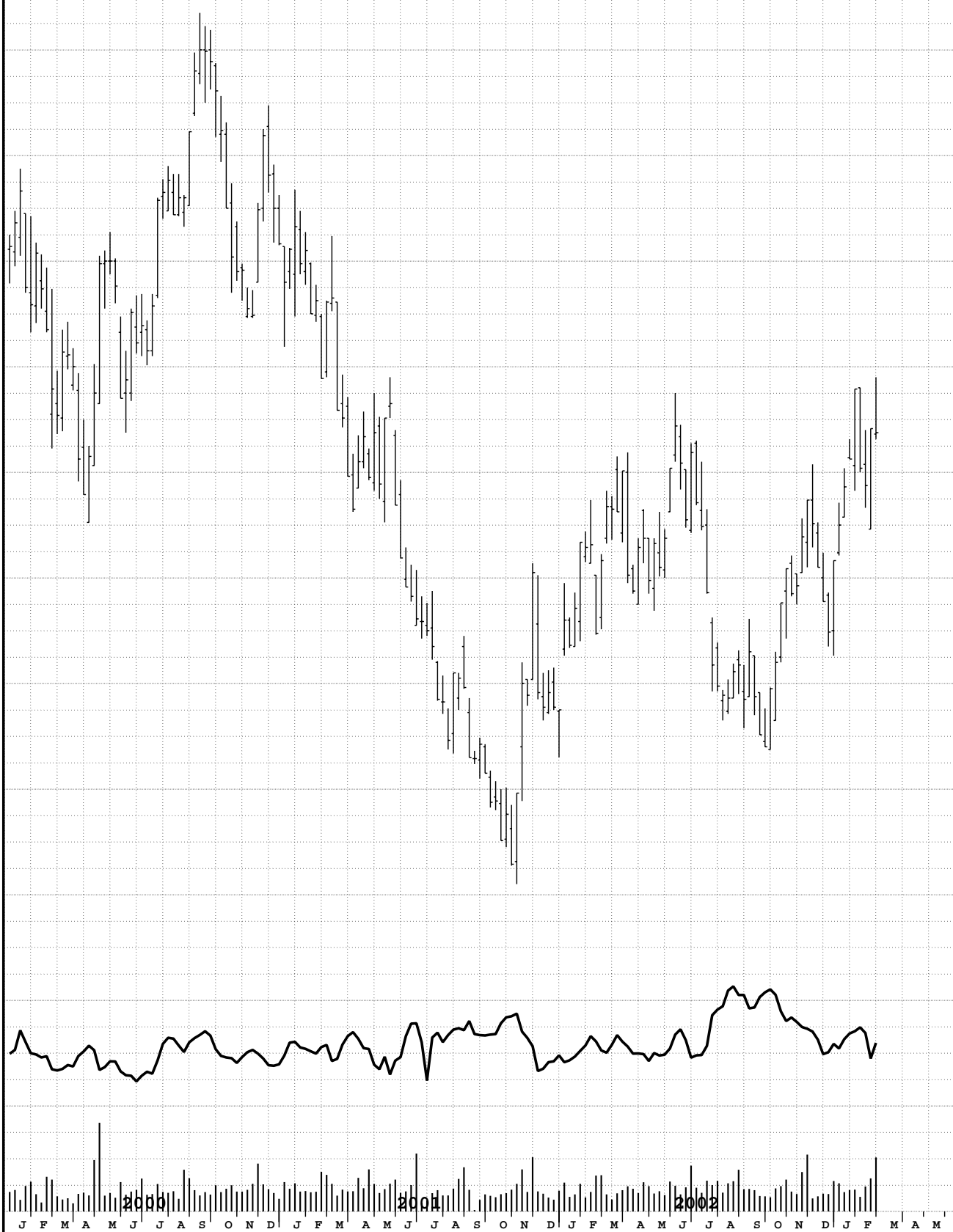
EACH GRID = 1.00
VALUE = \$250

¢/LB

98
96
94
92
90
88
86
84
82
80
78
76
74
72
70
68
66
64
62
60

VOL & O.I.

125000
100000
75000
50000
25000



J F M A M J J A S O N D J F M A M J J A S O N D J F M A M J J A S O N D J F M A M

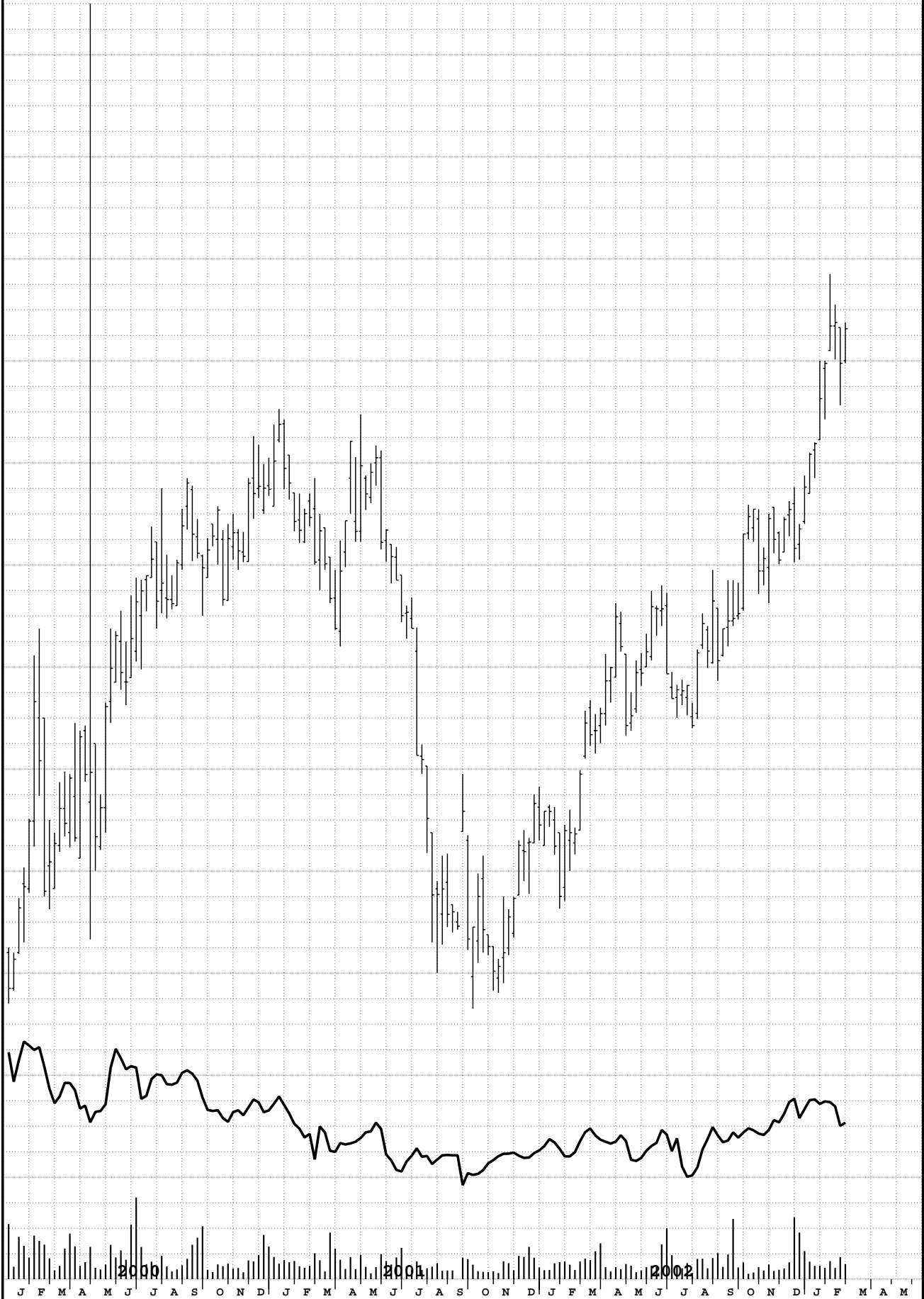
AS OF: 02/28/03

PLATINUM - NYMEX WEEKLY NEAREST FUTURES

EACH GRID = 10.0
VALUE = \$500

\$/TROY
ONZE

800
780
760
740
720
700
680
660
640
620
600
580
560
540
520
500
480
460
440
420
VOL & O.I.
12500
10000
7500
5000
2500



AS OF: 02/28/03

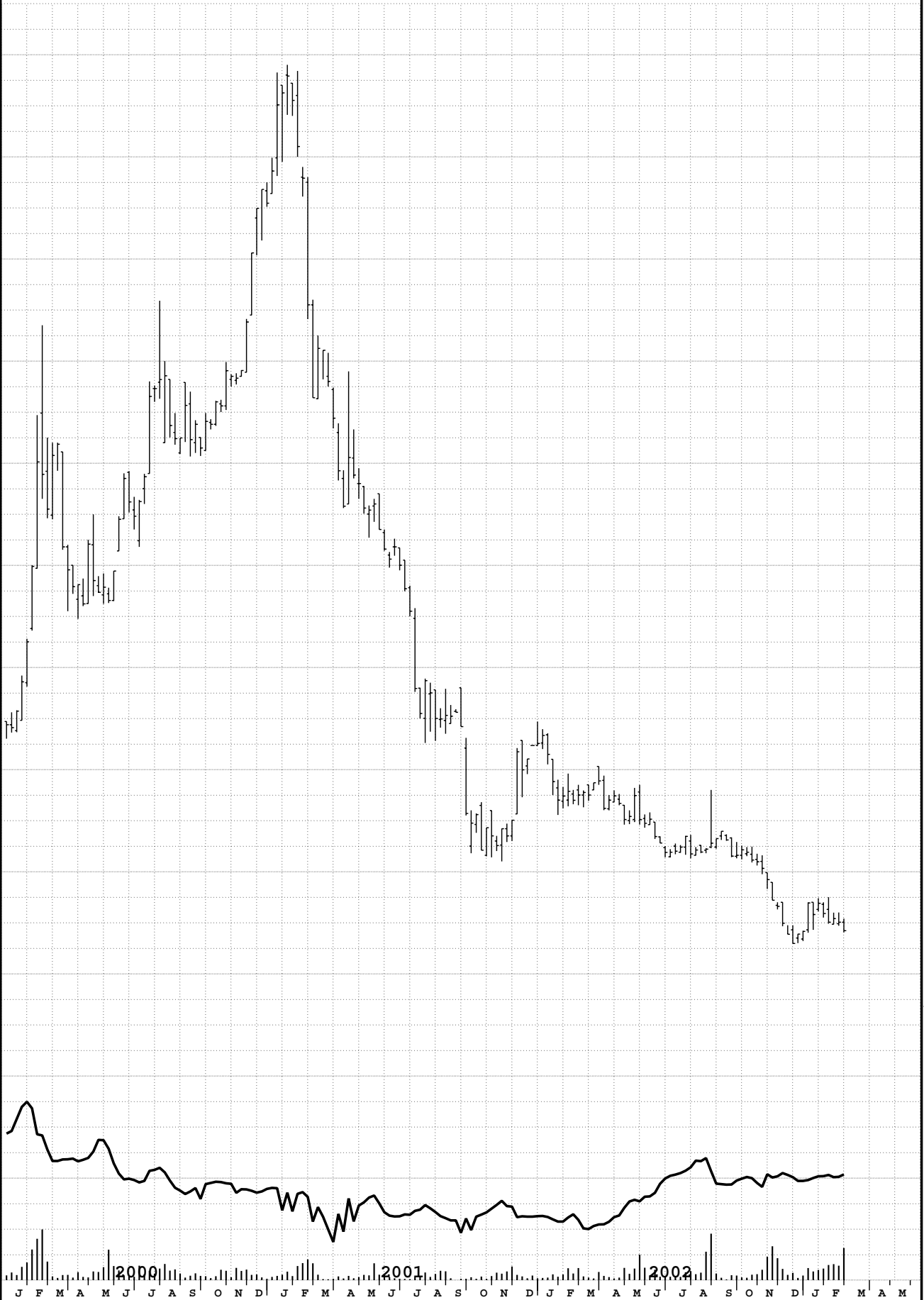
PALLADIUM - NYMEX WEEKLY NEAREST FUTURES

EACH GRID = 25.00
VALUE = \$2500

1150
1100
1050
1000
950
900
850
800
750
700
650
600
550
500
450
400
350
300
250
200

VOL & O.I.

5000
4000
3000
2000
1000



J F M A M J J A S O N D J F M A M J J A S O N D J F M A M J J A S O N D J F M A M

AS OF: 02/28/03

ALUMINIUM - COMEX WEEKLY NEAREST FUTURES

EACH GRID = 0.0050
VALUE = \$2.2

¢/LB

0.79

0.78

0.77

0.76

0.75

0.74

0.73

0.72

0.71

0.70

0.69

0.68

0.67

0.66

0.65

0.64

0.63

0.62

0.61

0.60

VOL & O.I.

12500

10000

7500

5000

2500

J F M A M J J A S O N D J F M A M J J A S O N D J F M A M J J A S O N D J F M A M

2000

2001

2002