

Barchart.com - Technical Indicators

As of: 022803		G CJ03	SIH03	HGH03	PLJ03	PAH03	ALH03	
High		351.5	464.5	78.75	674.8	245.00	0.6715	
Low		345.3	454.0	77.25	665.0	240.50	0.6715	
Settle		350.3s	458.5s	77.50s	672.5s	242.20s	0.6715s	
Change		+4.1	+2.4	-1.30	+5.5	-1.80	-0.0065	
4-Day High		360.6	473.5	79.75	675.0	254.00	0.6810	
4-Day Low		345.3	454.0	77.25	664.2	240.50	0.6700	
52-Week High		390.8	522.0	80.70	694.0i	334.00i	0.7045	
52-Week Low		295.4	430.0	66.75	531.1i	224.00i	0.6215	
Pivot	R2	355.2	469.5	79.33	680.5	247.06	0.6715	
Analysis	R1	352.7	464.0	78.41	676.5	244.63	0.6715	
	Pivot	349.0	459.0	77.83	670.7	242.56	0.6715	
	S1	346.5	453.5	76.91	666.7	240.13	0.6715	
	S2	342.8	448.5	76.33	660.9	238.06	0.6715	
Moving Averages	4-Day	350.7	461.1	78.46	669.7	247.44	0.6757	
	9-Day	350.9	462.9	77.11	662.4	250.10	0.6691	
	18-Day	358.1	463.5	76.99	667.5	252.89	0.6686	
	40-Day	359.1	474.8	76.39	644.5	255.83	0.6635	
*Price cross with MA at	4-D	350.2	460.0	78.63	669.9	246.08	0.6766	
	5-D	350.7	461.1	78.46	669.7	247.44	0.6757	
	9-D	351.8	463.9	77.50	664.1	249.99	0.6703	
	10-D	350.9	462.9	77.11	662.4	250.10	0.6691	
	18-D	356.9	461.8	76.93	667.0	252.01	0.6683	
	40-D	359.4	474.6	76.51	645.7	256.24	0.6640	
*MA cross at price of	4-9D	360.3	484.6	71.42	632.6	271.07	0.6360	
	4-18D	382.7	468.6	70.37	655.9	274.86	0.6363	
	4-40D	390.3	523.2	69.43	564.8	290.10	0.6220	
	9-18D	438.5	428.8	67.75	714.0	284.35	0.6370	
	9-40D	438.7	585.4	66.23	455.4	320.81	0.5994	
	18-40D	439.0	870.1	63.46	-14.8	387.09	0.5311	
RSI	9-Day RSI	43.0	41.5	51.6	61.2	28.6	52.6	
*Price for	80%	414.3	527.8	89.29	712.1	299.85	0.7216	
*RSI-9 of	20%	310.4	419.8	64.34	585.6	232.61	0.6117	
	14-Day RSI	44.6	42.7	52.8	61.7	36.0	53.4	
*Price for	80%	443.9	569.2	94.33	737.1	330.72	0.7490	
*RSI-14 of	20%	285.3	391.0	57.21	524.9	209.97	0.5741	
	20-Day RSI	46.9	44.3	53.5	62.5	39.6	53.9	
*Price for	80%	469.5	613.1	99.64	762.3	370.19	0.7797	
*RSI-20 of	20%	253.3	353.2	49.46	454.3	179.95	0.5312	
Stochastics	9-Day	Raw	43.4	36.2	61.9	92.3	8.7	58.7
		%K	39.7	47.7	73.9	70.2	21.5	73.2
		%D	37.2	53.4	68.5	58.3	27.1	66.7
*%K %D cross			348.2	466.6	77.26	653.7	246.04	0.6703
*%K %D at cross			37.2	53.4	68.5	58.3	27.1	66.7
	14-Day	Raw	25.2	40.0	61.9	75.9	8.7	65.5
		%K	22.2	37.6	72.6	63.4	15.5	73.1
		%D	21.7	34.7	66.1	55.1	17.7	64.3
*%K %D cross			347.3	455.7	76.98	657.7	244.81	0.6663
*%K %D at cross			21.7	34.7	66.1	55.1	17.7	64.3
	20-Day	Raw	16.3	20.2	60.8	58.3	4.9	65.5
		%K	17.1	25.1	69.4	54.4	11.3	67.5
		%D	19.4	27.8	62.5	54.0	15.5	59.2
*%K %D cross			353.9	464.9	76.77	669.9	248.82	0.6651
*%K %D at cross			19.4	27.8	62.5	54.0	15.5	59.2
Momentum	4-Day	-6.1	-13.0	-1.15	+8.7	-8.45	-0.0015	
	9-Day	-1.9	+5.0	+1.95	-2.5	-11.80	+0.0140	
	10-Day	-7.4	+5.2	+2.50	-4.1	-12.80	+0.0155	
	18-Day	-21.3	-25.0	-1.40	-11.2	-25.45	-0.0055	
	20-Day	-19.4	-28.5	-1.55	+24.7	-15.95	-0.0125	
	40-Day	+1.3	-22.7	+7.25	+78.1	+4.20	+0.0295	
Average True Range	4-Day	7.7	9.5	1.40	9.7	6.11	0.0054	
	9-Day	7.8	9.5	1.42	10.7	6.38	0.0054	
	10-Day	7.8	9.5	1.42	10.8	6.47	0.0054	
	18-Day	7.4	9.6	1.38	10.5	6.92	0.0054	
	20-Day	7.3	9.6	1.37	10.3	6.97	0.0053	
	40-Day	6.2	9.1	1.27	8.9	6.76	0.0050	

i = indicates insufficient data

* prices indicated apply only for next trading session

<http://www.barchart.com>

GOLD - COMEX

AS OF: 02/28/03

APRIL 2003

EXP 04/28/03

EACH GRID = 2.5
VALUE = \$250

\$/TROY
ONZE

400

395

390

385

380

375

370

365

360

355

350

345

340

335

330

325

320

315

310

305

VOL & O.I.

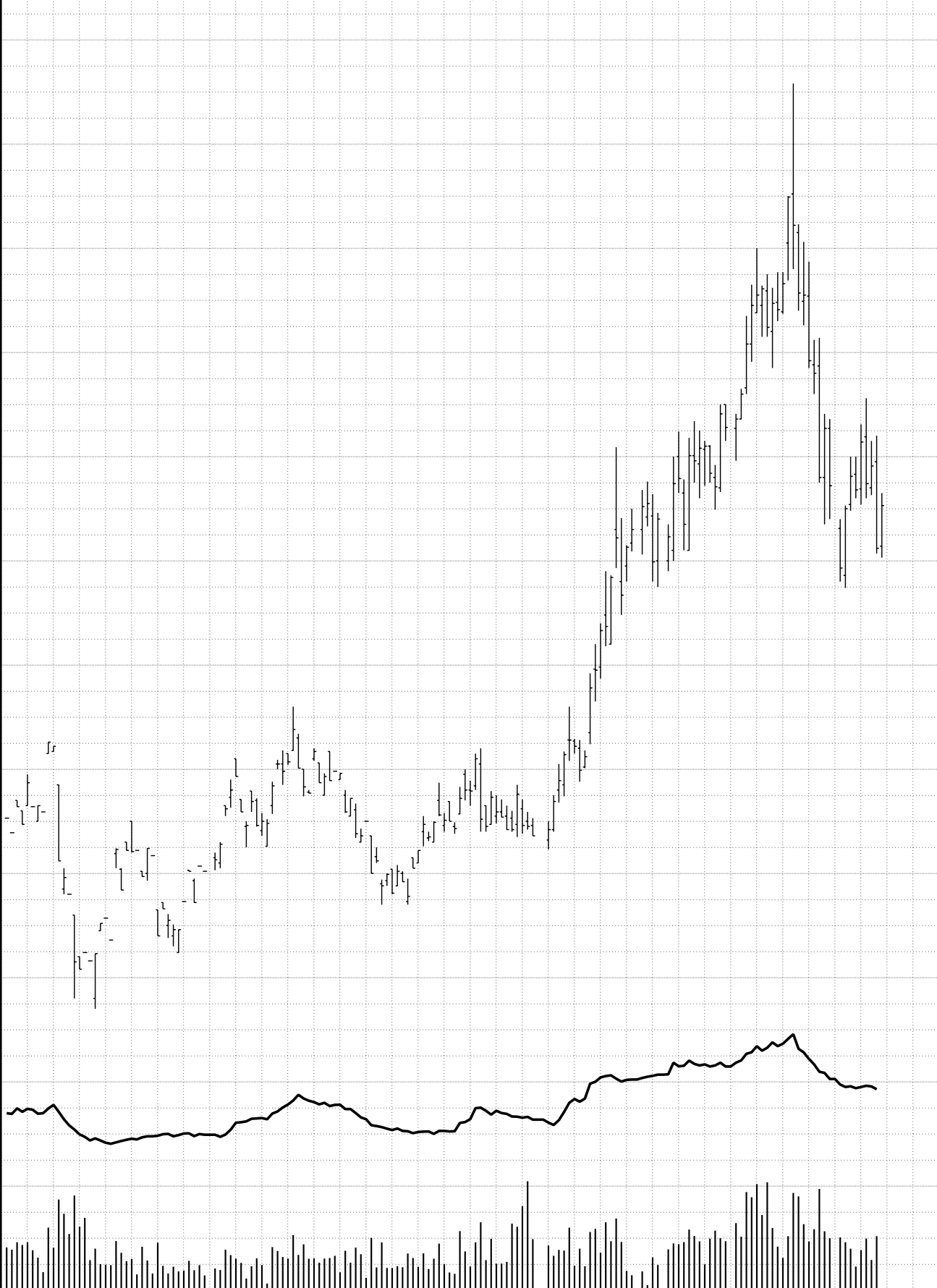
250000

200000

150000

100000

50000



15 22 29 5 12 19 26 2 9 16 23 30 7 14 21 28 4 11 18 25 2 9 16 23 30 6 13 20 27 3 10 17 24 3 10
JUL-02 AUG SEP OCT NOV DEC JAN-03 FEB

GOLD - COMEX

AS OF:02/28/03

JUNE 2003

EXP 06/26/03

EACH GRID = 2.5
VALUE = \$250

\$/TROY
ONZE

400

395

390

385

380

375

370

365

360

355

350

345

340

335

330

325

320

315

310

305

VOL & O.I.

250000

200000

150000

100000

50000



15 22 29 5 12 19 26 2 9 16 23 30 7 14 21 28 4 11 18 25 2 9 16 23 30 6 13 20 27 3 10 17 24 3 10
JUL-02 AUG SEP OCT NOV DEC JAN-03 FEB

SILVER - COMEX

AS OF: 02/28/03

MARCH 2003

EXP 03/27/03

EACH GRID = 2.5
VALUE = \$125

¢/TROY
ONZE

525

520

515

510

505

500

495

490

485

480

475

470

465

460

455

450

445

440

435

430

VOL & O.I.

125000

100000

75000

50000

25000



15 22 29 5 12 19 26 2 9 16 23 30 7 14 21 28 4 11 18 25 2 9 16 23 30 6 13 20 27 3 10 17 24 3 10
JUL-02 AUG SEP OCT NOV DEC JAN-03 FEB

SILVER - COMEX

AS OF: 02/28/03

MAY 2003

EXP 05/28/03

EACH GRID = 2.5
VALUE = \$125

¢/TROY
ONZE

525

520

515

510

505

500

495

490

485

480

475

470

465

460

455

450

445

440

435

430

VOL & O.I.

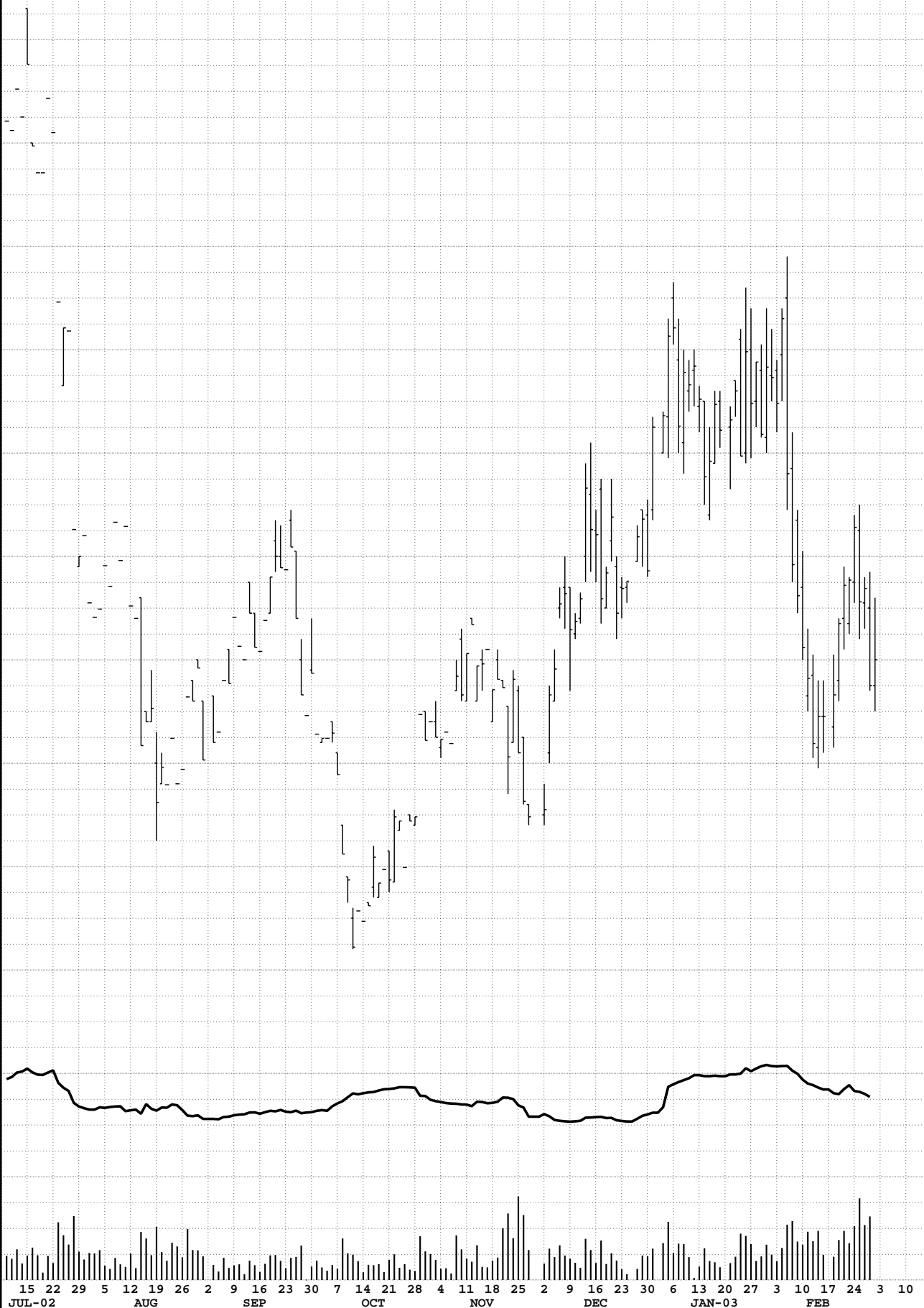
125000

100000

75000

50000

25000



HIGH GRADE COPPER - COMEX

AS OF: 02/28/03

MARCH 2003

EXP 03/27/03

EACH GRID = 0.50
VALUE = \$125

¢/LB

83

82

81

80

79

78

77

76

75

74

73

72

71

70

69

68

67

66

65

64

VOL & O.I.

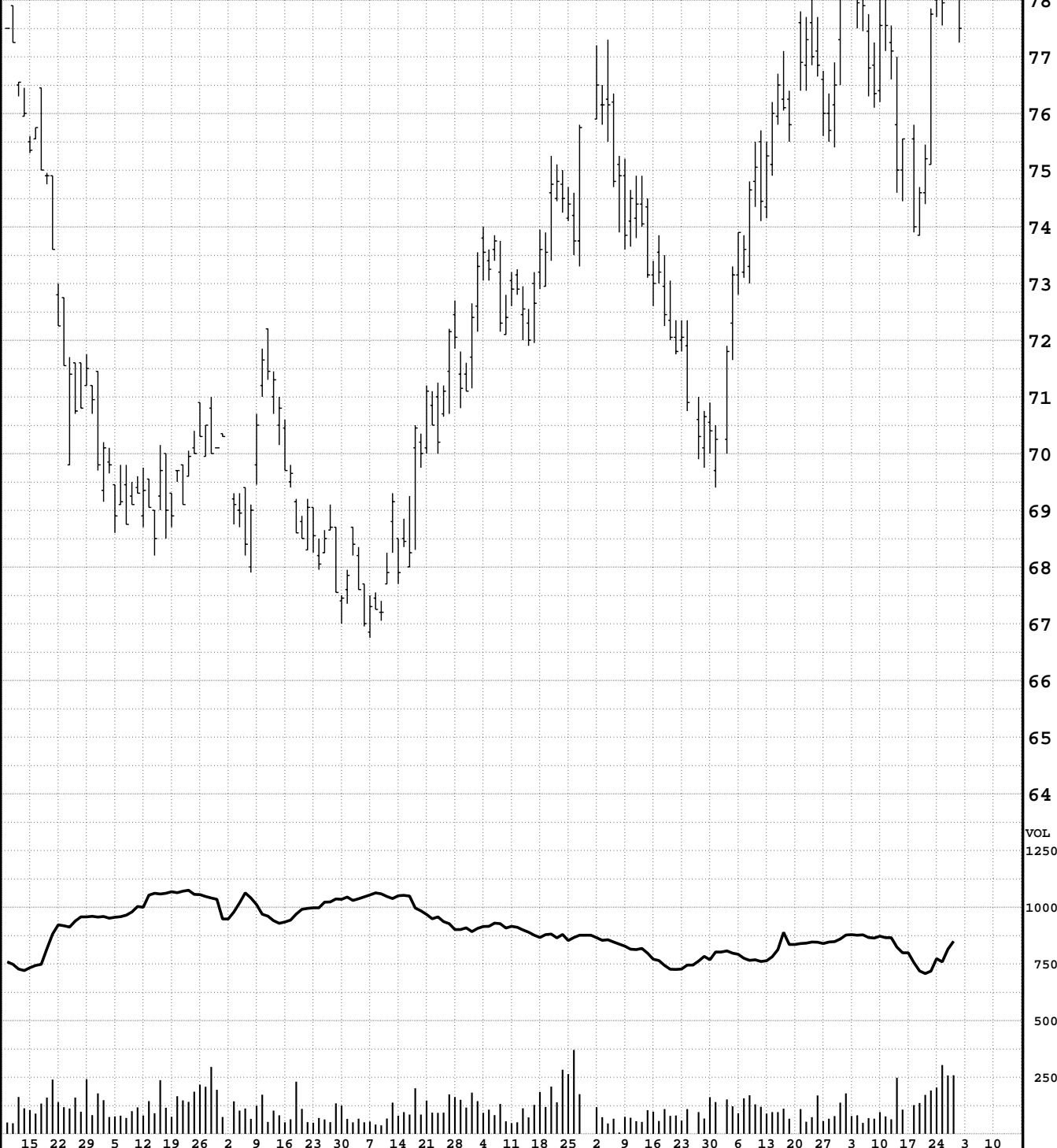
125000

100000

75000

50000

25000



15 22 29 5 12 19 26 2 9 16 23 30 7 14 21 28 4 11 18 25 2 9 16 23 30 6 13 20 27 3 10 17 24 3 10
JUL-02 AUG SEP OCT NOV DEC JAN-03 FEB

HIGH GRADE COPPER - COMEX

AS OF: 02/28/03

MAY 2003

EXP 05/28/03

EACH GRID = 0.50

VALUE = \$125

¢/LB

84

83

82

81

80

79

78

77

76

75

74

73

72

71

70

69

68

67

66

65

VOL & O.I.

125000

100000

75000

50000

25000



15 22 29 5 12 19 26 2 9 16 23 30 7 14 21 28 4 11 18 25 2 9 16 23 30 6 13 20 27 3 10 17 24 3 10
JUL-02 AUG SEP OCT NOV DEC JAN-03 FEB

AS OF:02/28/03

PLATINUM - NYMEX

APRIL 2003

EXP 04/25/03

EACH GRID = 5.0
VALUE = \$250

\$/TROY
ONZE

720

710

700

690

680

670

660

650

640

630

620

610

600

590

580

570

560

550

540

530

VOL & O.I.

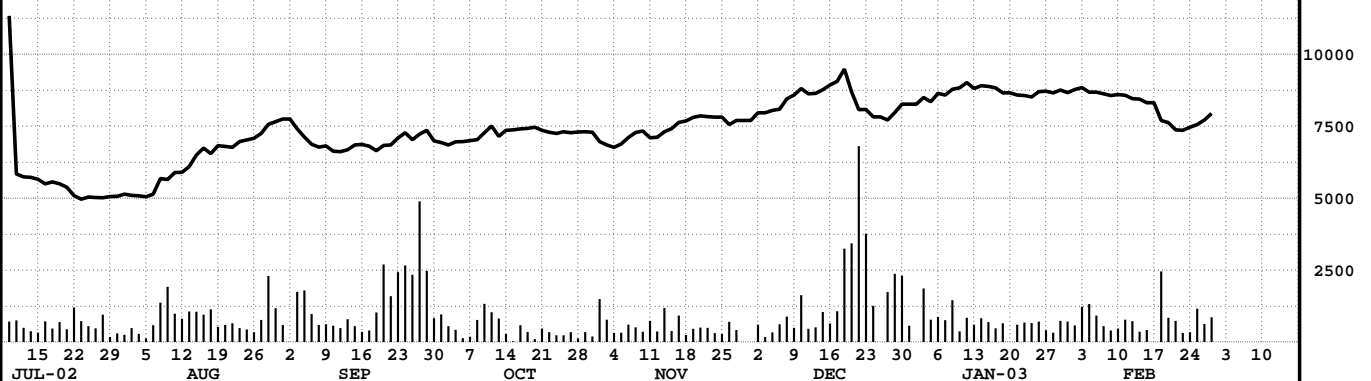
12500

10000

7500

5000

2500



15 22 29 5 12 19 26 2 9 16 23 30 7 14 21 28 4 11 18 25 2 9 16 23 30 6 13 20 27 3 10 17 24 3 10
JUL-02 AUG SEP OCT NOV DEC JAN-03 FEB

PLATINUM - NYMEX

AS OF: 02/28/03

JULY 2003

EXP 07/28/03

EACH GRID = 5.0
VALUE = \$250

\$/TROY
ONZE

710

700

690

680

670

660

650

640

630

620

610

600

590

580

570

560

550

540

530

520

VOL & O.I.

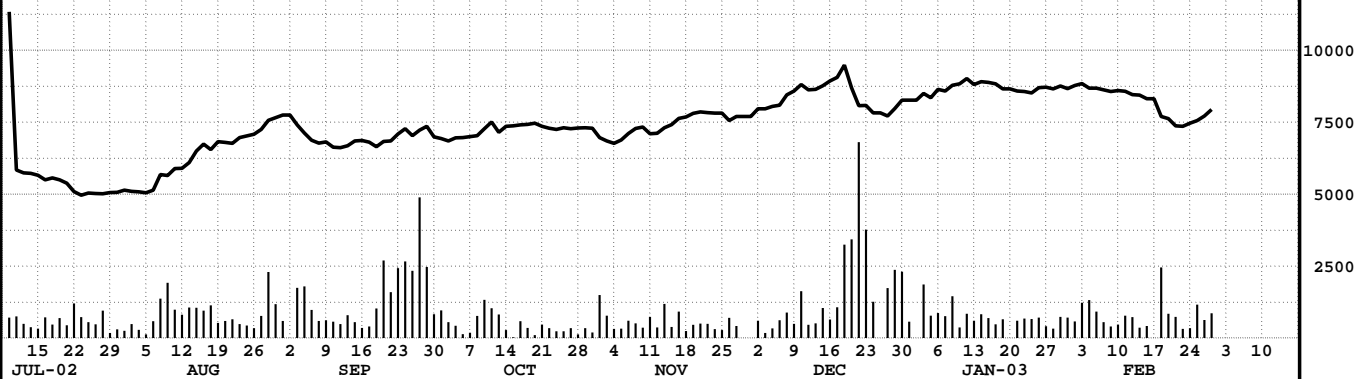
12500

10000

7500

5000

2500



15 22 29 5 12 19 26 2 9 16 23 30 7 14 21 28 4 11 18 25 2 9 16 23 30 6 13 20 27 3 10 17 24 3 10
JUL-02 AUG SEP OCT NOV DEC JAN-03 FEB

PALLADIUM - NYMEX

AS OF: 02/28/03

MARCH 2003

EXP 03/26/03

EACH GRID = 5.00
VALUE = \$500

380

370

360

350

340

330

320

310

300

290

280

270

260

250

240

230

220

210

200

190

VOL & O.I.

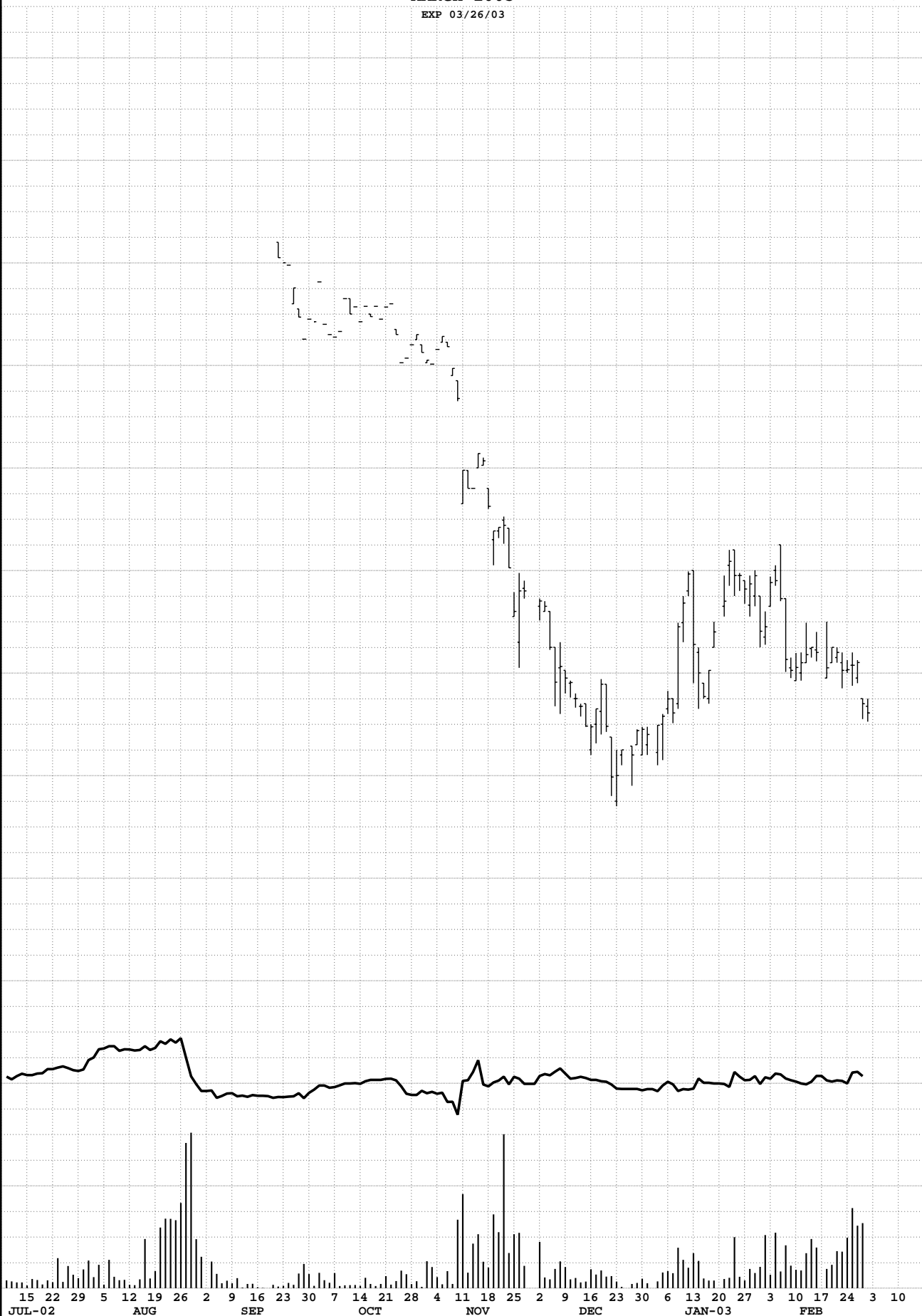
2500

2000

1500

1000

500



15 22 29 5 12 19 26 2 9 16 23 30 7 14 21 28 4 11 18 25 2 9 16 23 30 6 13 20 27 3 10 17 24 3 10
JUL-02 AUG SEP OCT NOV DEC JAN-03 FEB

ALUMINIUM - COMEX

AS OF: 02/28/03

MARCH 2003

EXP 03/27/03

EACH GRID = 0.0025
VALUE = \$1.1

¢/LB

0.705

0.700

0.695

0.690

0.685

0.680

0.675

0.670

0.665

0.660

0.655

0.650

0.645

0.640

0.635

0.630

0.625

0.620

0.615

0.610

VOL & O.I.

12500

10000

7500

5000

2500

15 22 29 5 12 19 26 2 9 16 23 30 7 14 21 28 4 11 18 25 2 9 16 23 30 6 13 20 27 3 10 17 24 3 10
JUL-02 AUG SEP OCT NOV DEC JAN-03 FEB