

Barchart.com - Technical Indicators

As of: 022803		DXH03	BPH03	CDH03	JYH03	SFH03	ECH03	ADH03
High		100.08	1.5822	0.6738	0.8506	0.7406	1.0801	0.6080
Low		99.71	1.5712	0.6682	0.8433	0.7341	1.0729	0.6023
Settle		99.81s	1.5726s	0.6729s	0.8474s	0.7397s	1.0795s	0.6077s
Change		-0.06	-0.0062	+0.0033	-0.0039	+0.0030	+0.0035	+0.0034
4-Day High		100.21	1.5872	0.6738	0.8588	0.7440	1.0830	0.6080
4-Day Low		99.35	1.5680	0.6673	0.8433	0.7330	1.0723	0.6023
52-Week High		120.03i	1.6524	0.6738	0.8755	0.7465	1.0919	0.6080
52-Week Low		98.87i	1.3852	0.6213	0.7693	0.5882	0.8555	0.5072
Pivot	R2	100.23	1.5863	0.6772	0.8544	0.7446	1.0847	0.6117
Analysis	R1	100.02	1.5794	0.6750	0.8509	0.7421	1.0821	0.6097
	Pivot	99.86	1.5753	0.6716	0.8471	0.7381	1.0775	0.6060
	S1	99.65	1.5684	0.6694	0.8436	0.7356	1.0749	0.6040
	S2	99.49	1.5643	0.6660	0.8398	0.7316	1.0703	0.6003
Moving Averages	4-Day	99.82	1.5753	0.6703	0.8517	0.7381	1.0773	0.6058
	9-Day	99.98	1.5818	0.6664	0.8478	0.7353	1.0763	0.6001
	18-Day	100.01	1.6032	0.6611	0.8394	0.7357	1.0771	0.5948
	40-Day	100.61	1.6087	0.6541	0.8415	0.7317	1.0683	0.5869
*Price cross with MA at	4-D	99.79	1.5763	0.6705	0.8510	0.7383	1.0779	0.6062
	5-D	99.82	1.5753	0.6703	0.8517	0.7381	1.0773	0.6058
	9-D	99.88	1.5809	0.6673	0.8485	0.7364	1.0774	0.6016
	10-D	99.98	1.5818	0.6664	0.8478	0.7353	1.0763	0.6001
	18-D	100.05	1.6008	0.6613	0.8396	0.7353	1.0766	0.5951
	40-D	100.54	1.6093	0.6546	0.8417	0.7321	1.0692	0.5876
*MA cross at price of	4-9D	100.41	1.6055	0.6500	0.8349	0.7264	1.0745	0.5766
	4-18D	101.08	1.6954	0.6256	0.7955	0.7237	1.0715	0.5523
	4-40D	103.03	1.7192	0.6015	0.8104	0.7114	1.0404	0.5253
	9-18D	102.76	1.9202	0.5647	0.6968	0.7170	1.0641	0.4915
	9-40D	107.26	1.9025	0.5232	0.7707	0.6871	0.9854	0.4426
	18-40D	115.46	1.8703	0.4479	0.9052	0.6328	0.8423	0.3536
RSI	9-Day RSI	45.6	29.7	79.2	56.5	57.8	55.3	73.1
*Price for	80%	104.57	1.7077	0.6735	0.8801	0.7702	1.1229	0.6158
*RSI-9 of	20%	96.27	1.5465	0.6228	0.7963	0.6878	1.0174	0.5447
	14-Day RSI	44.0	34.3	74.9	56.2	57.4	56.5	70.9
*Price for	80%	108.24	1.7680	0.6797	0.9006	0.7906	1.1482	0.6244
*RSI-14 of	20%	94.17	1.5116	0.5986	0.7662	0.6555	0.9725	0.5134
	20-Day RSI	42.2	38.8	71.7	55.6	58.2	58.3	69.3
*Price for	80%	112.84	1.8219	0.6890	0.9268	0.8102	1.1718	0.6358
*RSI-20 of	20%	92.14	1.4587	0.5725	0.7311	0.6161	0.9165	0.4783
Stochastics	9-Day	Raw	32.9	11.2	95.2	61.9	77.1	76.8
		%K	31.0	14.9	89.8	75.2	68.1	64.6
		%D	33.0	15.1	86.0	78.0	62.0	58.8
*%K %D cross			99.79	1.5729	0.6704	0.8556	0.7349	1.0741
*%K %D at cross			33.0	15.1	86.0	78.0	62.0	58.8
	14-Day	Raw	26.3	7.2	96.0	69.0	77.1	73.6
		%K	31.8	10.9	90.8	78.0	64.2	59.5
		%D	39.6	12.1	87.2	77.6	55.0	51.6
*%K %D cross			100.31	1.5760	0.6692	0.8502	0.7320	1.0720
*%K %D at cross			39.6	12.1	87.2	77.6	55.0	51.6
	20-Day	Raw	42.2	5.5	96.1	69.0	68.1	53.9
		%K	43.7	9.7	91.5	76.3	58.7	47.6
		%D	45.7	12.9	88.7	73.7	53.0	46.9
*%K %D cross			99.98	1.5836	0.6700	0.8472	0.7340	1.0772
*%K %D at cross			45.7	12.9	88.7	73.7	53.0	46.9
Momentum	4-Day	+0.07	-0.0102	+0.0022	-0.0014	+0.0025	+0.0013	+0.0034
	9-Day	-0.44	-0.0356	+0.0163	+0.0156	+0.0065	+0.0033	+0.0173
	10-Day	+0.09	-0.0452	+0.0149	+0.0172	+0.0008	-0.0030	+0.0143
	18-Day	-0.31	-0.0638	+0.0147	+0.0150	+0.0055	+0.0046	+0.0253
	20-Day	+0.06	-0.0752	+0.0204	+0.0072	+0.0021	+0.0009	+0.0221
	40-Day	-2.45	-0.0296	+0.0407	+0.0027	+0.0148	+0.0324	+0.0529
Average True Range	4-Day	0.62	0.0136	0.0043	0.0076	0.0074	0.0088	0.0053
	9-Day	0.68	0.0137	0.0042	0.0076	0.0076	0.0095	0.0055
	10-Day	0.68	0.0136	0.0042	0.0076	0.0076	0.0096	0.0055
	18-Day	0.69	0.0131	0.0041	0.0075	0.0074	0.0096	0.0054
	20-Day	0.69	0.0130	0.0041	0.0075	0.0073	0.0095	0.0053
	40-Day	0.65	0.0119	0.0038	0.0072	0.0067	0.0089	0.0049

i = indicates insufficient data

* prices indicated apply only for next trading session

<http://www.barchart.com>

U.S. DOLLAR INDEX - FINEX

AS OF:02/28/03

MARCH 2003

EXP 03/17/03

EACH GRID = 0.50
VALUE = \$500

INDEX
VALUE

114

113

112

111

110

109

108

107

106

105

104

103

102

101

100

99

98

97

96

95

VOL & O.I.

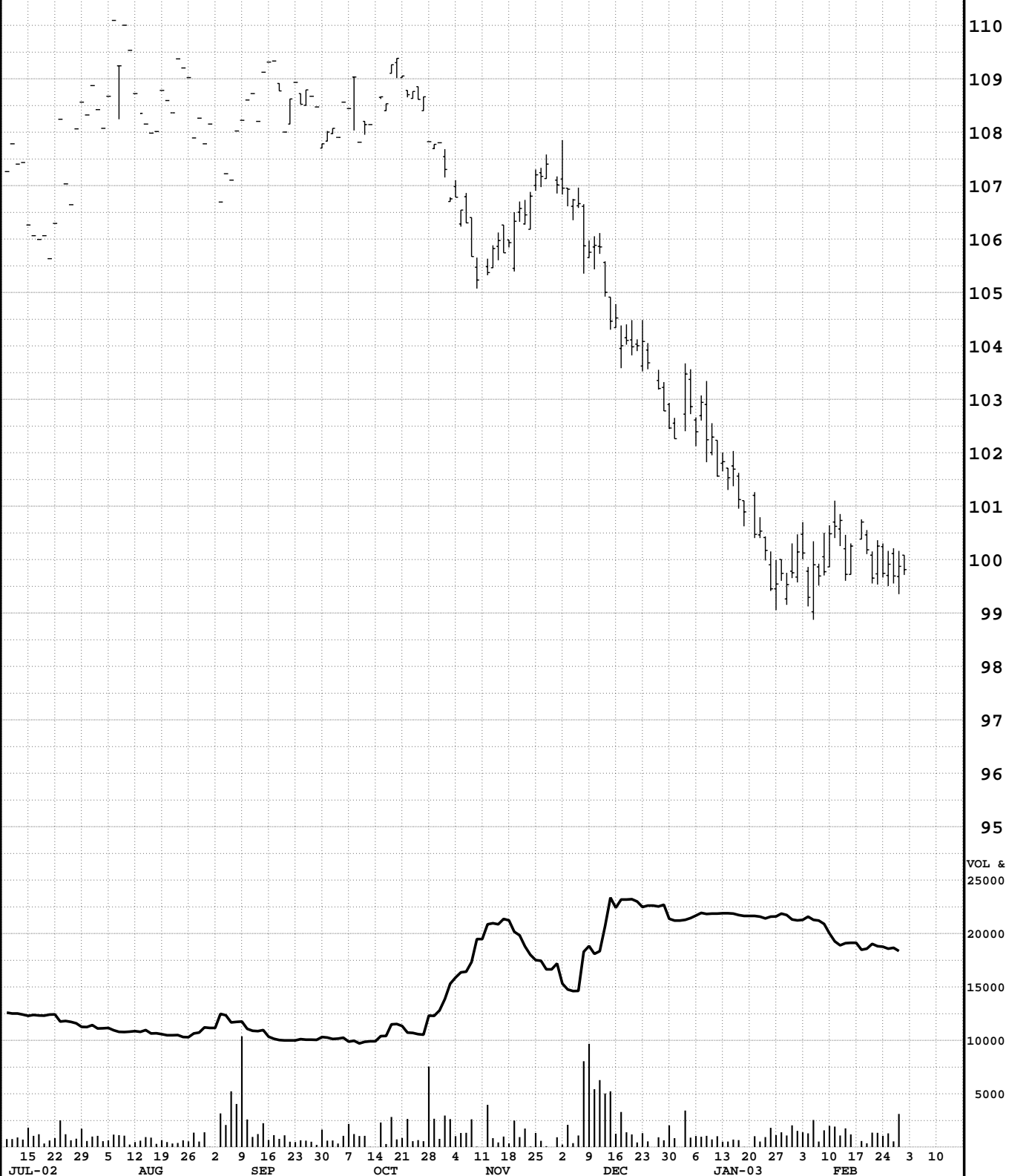
25000

20000

15000

10000

5000



15 22 29 5 12 19 26 2 9 16 23 30 7 14 21 28 4 11 18 25 2 9 16 23 30 6 13 20 27 3 10 17 24 3 10
JUL-02 AUG SEP OCT NOV DEC JAN-03 FEB

U.S. DOLLAR INDEX - FINEX

AS OF: 02/28/03

JUNE 2003

EXP 06/16/03

EACH GRID = 0.50
VALUE = \$500

INDEX
VALUE

115

114

113

112

111

110

109

108

107

106

105

104

103

102

101

100

99

98

97

96

VOL & O.I.

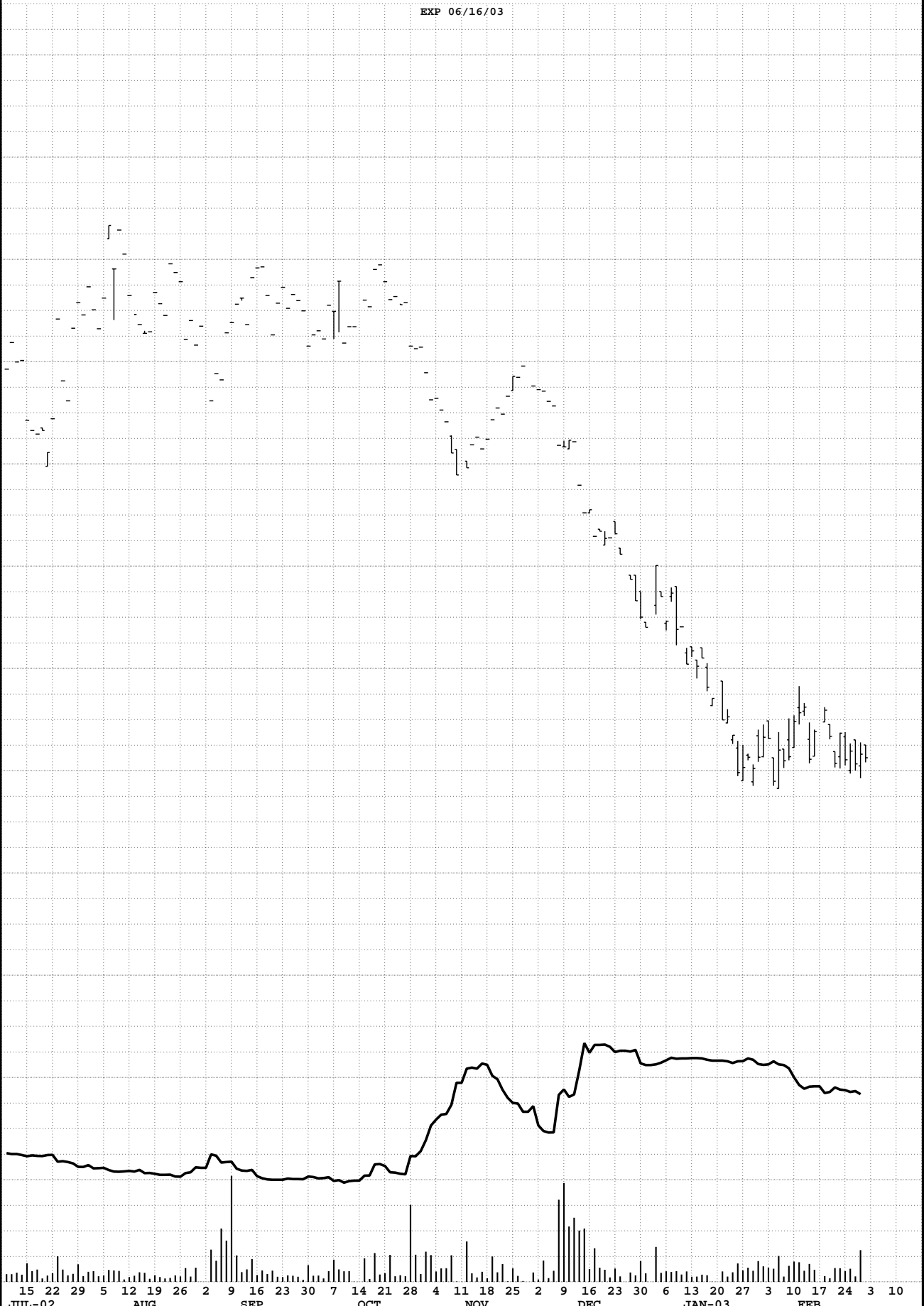
25000

20000

15000

10000

5000



15 22 29 5 12 19 26 2 9 16 23 30 7 14 21 28 4 11 18 25 2 9 16 23 30 6 13 20 27 3 10 17 24 3 10

JUL-02 AUG SEP OCT NOV DEC JAN-03 FEB

BRITISH POUND - IMM

AS OF:02/28/03

MARCH 2003

EXP 03/17/03

EACH GRID = 0.0050
VALUE = \$312.5

U.S. \$

1.67

1.66

1.65

1.64

1.63

1.62

1.61

1.60

1.59

1.58

1.57

1.56

1.55

1.54

1.53

1.52

1.51

1.50

1.49

1.48

VOL & O.I.

50000

40000

30000

20000

10000

15 22 29 5 12 19 26 2 9 16 23 30 7 14 21 28 4 11 18 25 2 9 16 23 30 6 13 20 27 3 10 17 24 3 10
JUL-02 AUG SEP OCT NOV DEC JAN-03 FEB

BRITISH POUND - IMM

AS OF:02/28/03

JUNE 2003

EXP 06/16/03

EACH GRID = 0.0050
VALUE = \$312.5

U.S. \$

1.67

1.66

1.65

1.64

1.63

1.62

1.61

1.60

1.59

1.58

1.57

1.56

1.55

1.54

1.53

1.52

1.51

1.50

1.49

1.48

VOL & O.I.

50000

40000

30000

20000

10000

15 22 29 5 12 19 26 2 9 16 23 30 7 14 21 28 4 11 18 25 2 9 16 23 30 6 13 20 27 3 10 17 24 3 10
JUL-02 AUG SEP OCT NOV DEC JAN-03 FEB

BRITISH POUND (E) - IMM

AS OF:02/28/03

MARCH 2003

EXP 03/17/03

EACH GRID = 0.0050
VALUE = \$312.5

U.S. \$

1.67

1.66

1.65

1.64

1.63

1.62

1.61

1.60

1.59

1.58

1.57

1.56

1.55

1.54

1.53

1.52

1.51

1.50

1.49

1.48

VOL & O.I.

10000

8000

6000

4000

2000

15 22 29 5 12 19 26 2 9 16 23 30 7 14 21 28 4 11 18 25 2 9 16 23 30 6 13 20 27 3 10 17 24 3 10
JUL-02 AUG SEP OCT NOV DEC JAN-03 FEB

CANADIAN DOLLAR - IMM

AS OF: 02/28/03

MARCH 2003

EXP 03/18/03

EACH GRID = 0.0025
VALUE = \$250.

U.S. \$

0.700

0.695

0.690

0.685

0.680

0.675

0.670

0.665

0.660

0.655

0.650

0.645

0.640

0.635

0.630

0.625

0.620

0.615

0.610

0.605

VOL & O.I.

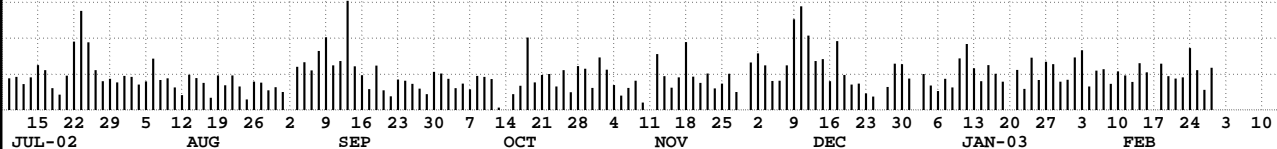
125000

100000

75000

50000

25000



CANADIAN DOLLAR - IMM

AS OF: 02/28/03

JUNE 2003

EXP 06/17/03

EACH GRID = 0.0025

VALUE = \$250.

U.S. \$

0.700

0.695

0.690

0.685

0.680

0.675

0.670

0.665

0.660

0.655

0.650

0.645

0.640

0.635

0.630

0.625

0.620

0.615

0.610

0.605

VOL & O.I.

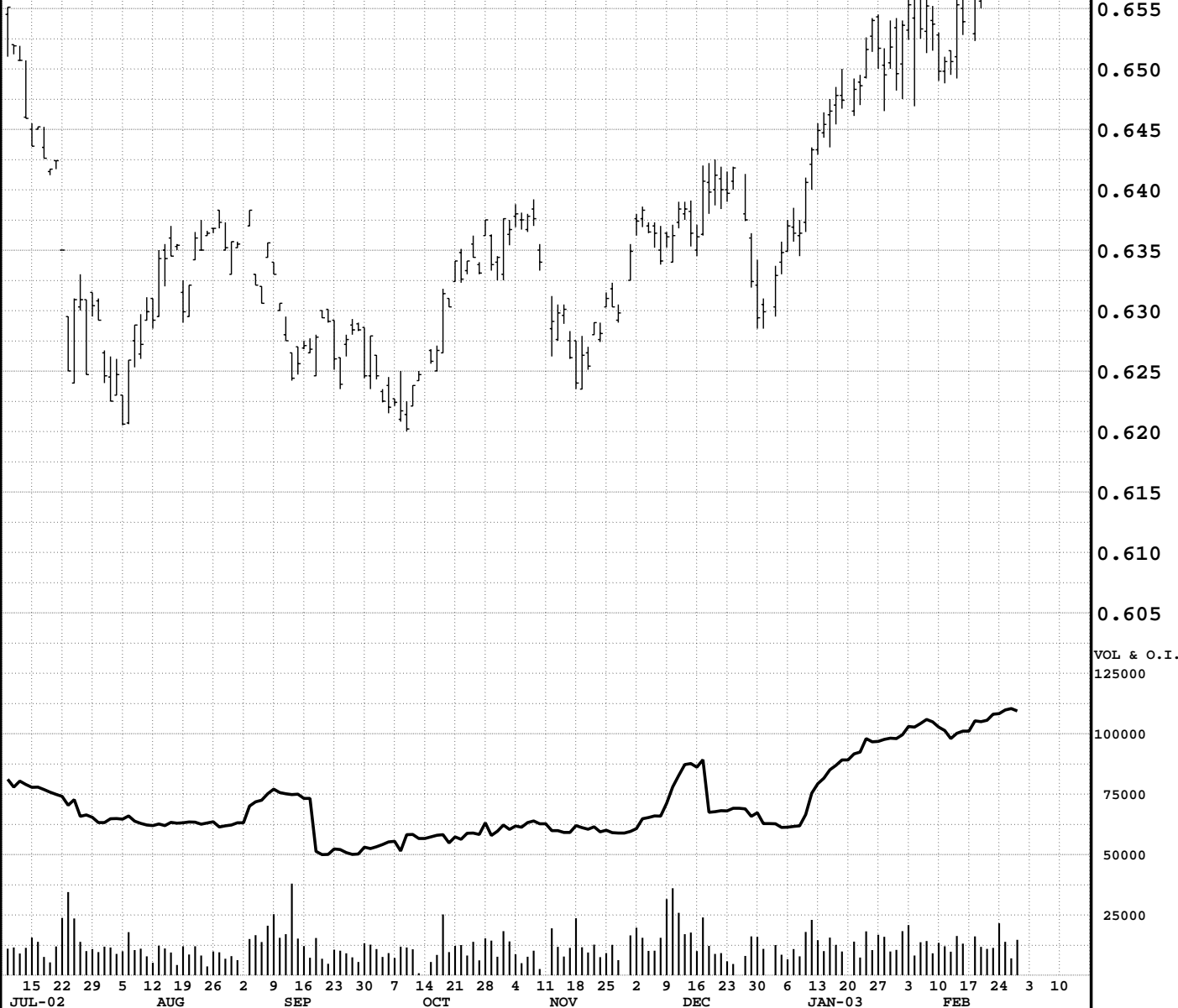
125000

100000

75000

50000

25000



15 22 29 5 12 19 26 2 9 16 23 30 7 14 21 28 4 11 18 25 2 9 16 23 30 6 13 20 27 3 10 17 24 3 10
JUL-02 AUG SEP OCT NOV DEC JAN-03 FEB

CANADIAN DOLLAR (E) - IMM

AS OF: 02/28/03

MARCH 2003

EXP 03/18/03

EACH GRID = 0.0025
VALUE = \$250

U.S. \$

0.700

0.695

0.690

0.685

0.680

0.675

0.670

0.665

0.660

0.655

0.650

0.645

0.640

0.635

0.630

0.625

0.620

0.615

0.610

0.605

VOL & O.I.

12500

10000

7500

5000

2500

15 22 29 5 12 19 26 2 9 16 23 30 7 14 21 28 4 11 18 25 2 9 16 23 30 6 13 20 27 3 10 17 24 3 10
JUL-02 AUG SEP OCT NOV DEC JAN-03 FEB

JAPANESE YEN - IMM

AS OF: 02/28/03

MARCH 2003

EXP 03/17/03

EACH GRID = 0.0025
VALUE = \$312.5

U.S. \$

0.890

0.885

0.880

0.875

0.870

0.865

0.860

0.855

0.850

0.845

0.840

0.835

0.830

0.825

0.820

0.815

0.810

0.805

0.800

0.795

VOL & O.I.

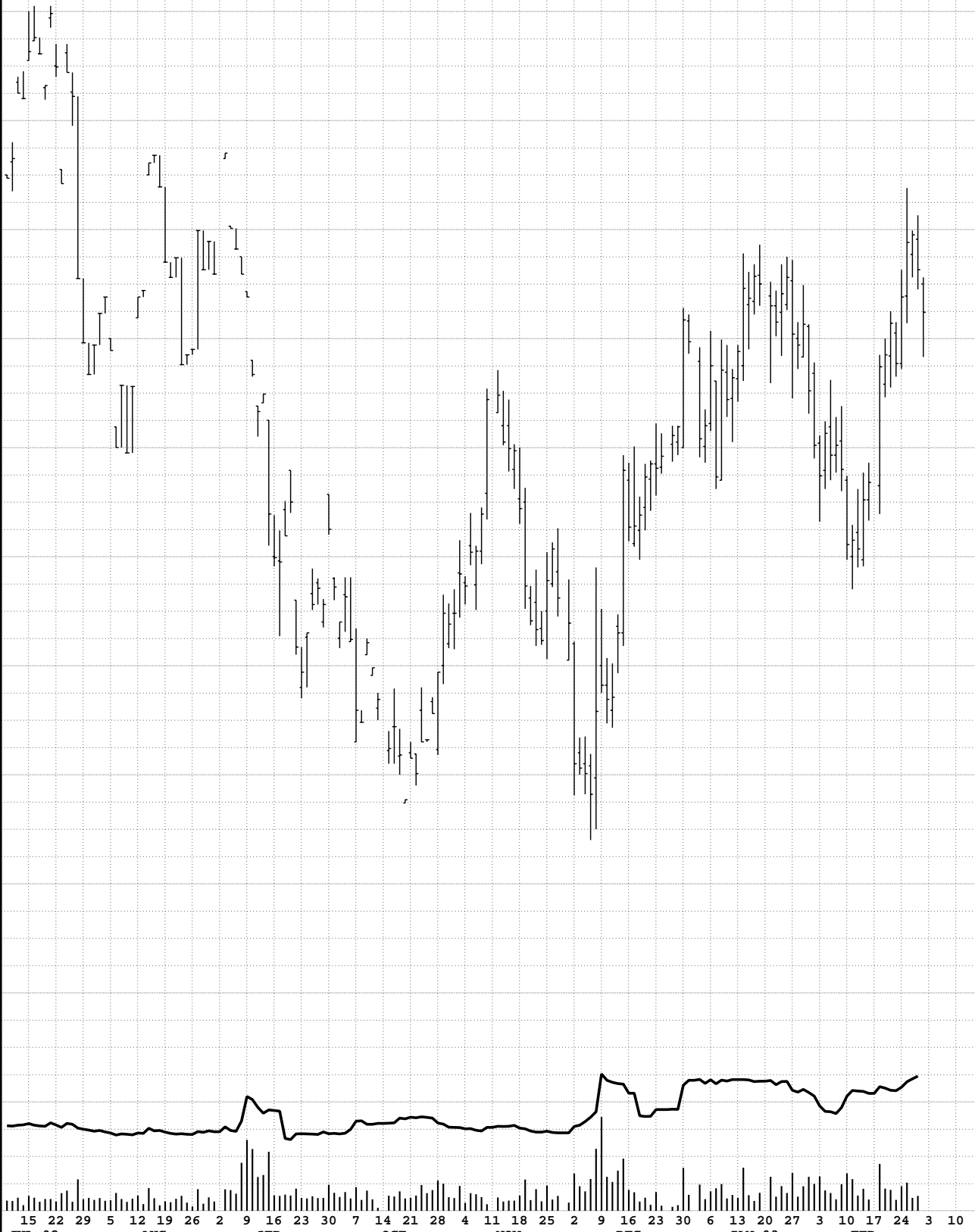
250000

200000

150000

100000

50000



15 22 29 5 12 19 26 2 9 16 23 30 7 14 21 28 4 11 18 25 2 9 16 23 30 6 13 20 27 3 10 17 24 3 10
JUL-02 AUG SEP OCT NOV DEC JAN-03 FEB

JAPANESE YEN - IMM

AS OF:02/28/03

JUNE 2003

EXP 06/16/03

EACH GRID = 0.0025
VALUE = \$312.5

U.S. \$

0.890

0.885

0.880

0.875

0.870

0.865

0.860

0.855

0.850

0.845

0.840

0.835

0.830

0.825

0.820

0.815

0.810

0.805

0.800

0.795

VOL & O.I.

250000

200000

150000

100000

50000



15 22 29 5 12 19 26 2 9 16 23 30 7 14 21 28 4 11 18 25 2 9 16 23 30 6 13 20 27 3 10 17 24 3 10
JUL-02 AUG SEP OCT NOV DEC JAN-03 FEB

JAPANESE YEN (E) - IMM

AS OF:02/28/03

MARCH 2003

EXP 03/17/03

EACH GRID = 0.0025
VALUE = \$312.5

U.S. \$

0.885

0.880

0.875

0.870

0.865

0.860

0.855

0.850

0.845

0.840

0.835

0.830

0.825

0.820

0.815

0.810

0.805

0.800

0.795

0.790

VOL & O.I.

25000

20000

15000

10000

5000

15 22 29 5 12 19 26 2 9 16 23 30 7 14 21 28 4 11 18 25 2 9 16 23 30 6 13 20 27 3 10 17 24 3 10
JUL-02 AUG SEP OCT NOV DEC JAN-03 FEB

AS OF:02/28/03

SWISS FRANC - IMM

MARCH 2003

EXP 03/17/03

EACH GRID = 0.0025
VALUE = \$312.5

U.S. \$
0.755

0.750

0.745

0.740

0.735

0.730

0.725

0.715

0.710

0.705

0.700

0.695

0.690

0.685

0.680

0.675

0.670

0.665

0.660

0.660

VOL & O.I.
100000

80000

60000

40000

20000

15 22 29 5 12 19 26 2 9 16 23 30 7 14 21 28 4 11 18 25 2 9 16 23 30 6 13 20 27 3 10 17 24 3 10
JUL-02 AUG SEP OCT NOV DEC JAN-03 FEB

AS OF:02/28/03

SWISS FRANC - IMM

JUNE 2003

EXP 06/16/03

EACH GRID = 0.0025
VALUE = \$312.5

U.S. \$
0.755

0.750

0.745

0.740

0.735

0.730

0.725

0.715

0.710

0.705

0.700

0.695

0.690

0.685

0.680

0.675

0.670

0.665

0.660

0.660

VOL & O.I.

100000

80000

60000

40000

20000

15 22 29 5 12 19 26 2 9 16 23 30 7 14 21 28 4 11 18 25 2 9 16 23 30 6 13 20 27 3 10 17 24 3 10
JUL-02 AUG SEP OCT NOV DEC JAN-03 FEB

AS OF:02/28/03

SWISS FRANC (E) - IMM

MARCH 2003

EXP 03/17/03

EACH GRID = 0.0025
VALUE = \$312.5

U.S. \$
0.755

0.750

0.745

0.740

0.735

0.730

0.725

0.720

0.715

0.710

0.705

0.700

0.695

0.690

0.685

0.680

0.675

0.670

0.665

0.660

VOL & O.I.
10000

8000

6000

4000

2000

15 22 29 5 12 19 26 2 9 16 23 30 7 14 21 28 4 11 18 25 2 9 16 23 30 6 13 20 27 3 10 17 24 3 10
JUL-02 AUG SEP OCT NOV DEC JAN-03 FEB

EURO FX - IMM

AS OF:02/28/03

MARCH 2003

EXP 03/17/03

EACH GRID = 0.0050
VALUE = \$625.

U.S. \$

1.13

1.12

1.11

1.10

1.09

1.08

1.07

1.06

1.05

1.04

1.03

1.02

1.01

1.00

0.99

0.98

0.97

0.96

0.95

0.94

VOL & O.I.

250000

200000

150000

100000

50000

15 22 29 5 12 19 26 2 9 16 23 30 7 14 21 28 4 11 18 25 2 9 16 23 30 6 13 20 27 3 10 17 24 3 10
JUL-02 AUG SEP OCT NOV DEC JAN-03 FEB

EURO FX - IMM

AS OF:02/28/03

JUNE 2003

EXP 06/16/03

EACH GRID = 0.0050
VALUE = \$625.

U.S. \$

1.12

1.11

1.10

1.09

1.08

1.07

1.06

1.05

1.04

1.03

1.02

1.01

1.00

0.99

0.98

0.97

0.96

0.95

0.94

0.93

VOL & O.I.

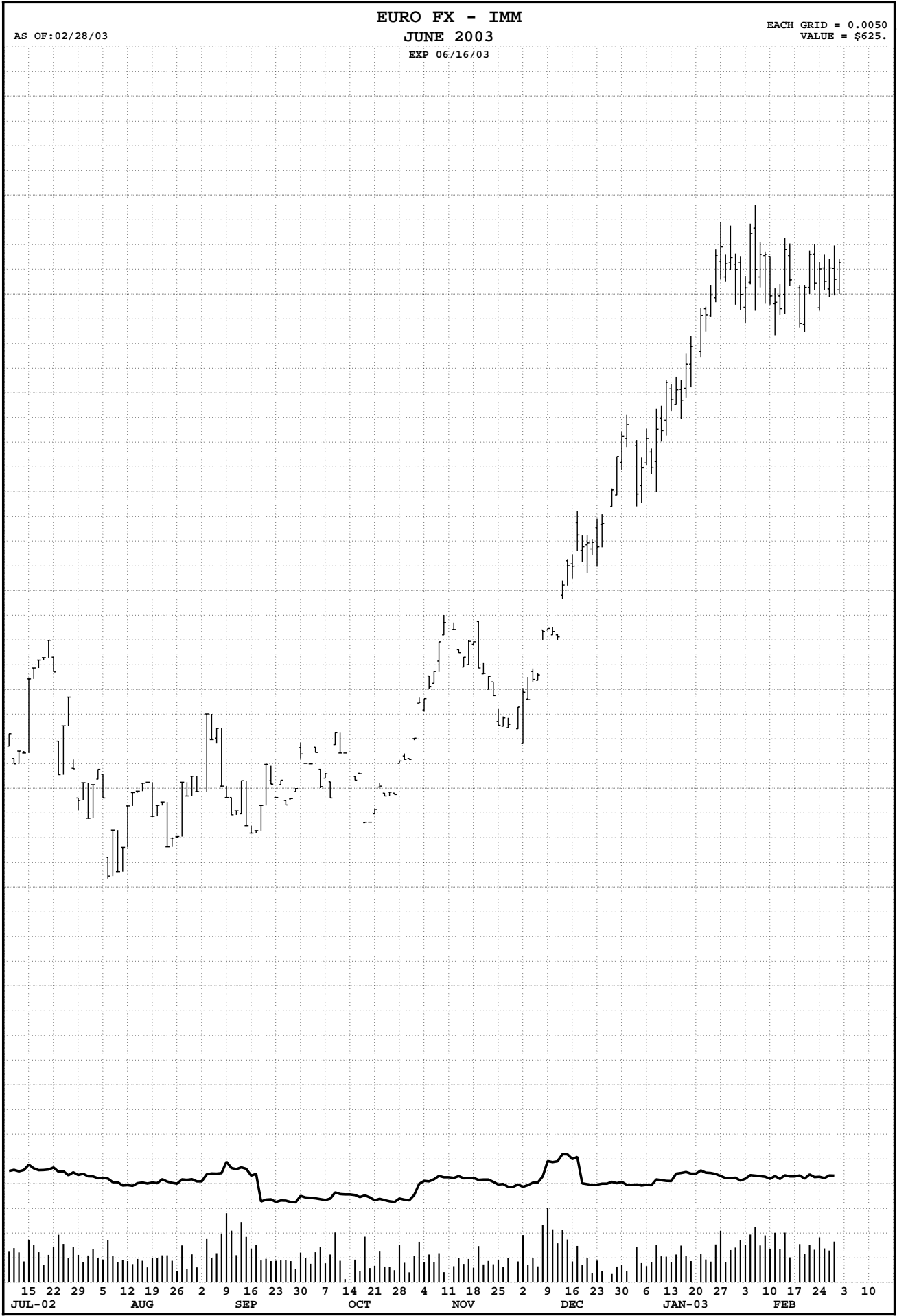
250000

200000

150000

100000

50000



15 22 29 5 12 19 26 2 9 16 23 30 7 14 21 28 4 11 18 25 2 9 16 23 30 6 13 20 27 3 10 17 24 3 10
JUL-02 AUG SEP OCT NOV DEC JAN-03 FEB

EURO FX (E) - IMM

AS OF:02/28/03

MARCH 2003

EXP 03/17/03

EACH GRID = 0.0050

VALUE = \$625

U.S. \$

1.13

1.12

1.11

1.10

1.09

1.08

1.07

1.06

1.05

1.04

1.03

1.02

1.01

1.00

0.99

0.98

0.97

0.96

0.95

0.94

VOL & O.I.

50000

40000

30000

20000

10000

15 22 29 5 12 19 26 2 9 16 23 30 7 14 21 28 4 11 18 25 2 9 16 23 30 6 13 20 27 3 10 17 24 3 10
JUL-02 AUG SEP OCT NOV DEC JAN-03 FEB

AUSTRALIAN DOLLAR - IMM

AS OF:02/28/03

MARCH 2003

EXP 03/17/03

EACH GRID = 0.0025

VALUE = \$250.

U.S. \$

0.615

0.610

0.605

0.600

0.595

0.590

0.585

0.580

0.575

0.570

0.565

0.560

0.555

0.550

0.545

0.540

0.535

0.530

0.525

0.520

VOL & O.I.

50000

40000

30000

20000

10000



15 22 29 5 12 19 26 2 9 16 23 30 7 14 21 28 4 11 18 25 2 9 16 23 30 6 13 20 27 3 10 17 24 3 10
JUL-02 AUG SEP OCT NOV DEC JAN-03 FEB

AUSTRALIAN DOLLAR - IMM

AS OF: 02/28/03

JUNE 2003

EXP 06/16/03

EACH GRID = 0.0025

VALUE = \$250.

U.S. \$

0.610

0.605

0.600

0.595

0.590

0.585

0.580

0.575

0.570

0.565

0.560

0.555

0.550

0.545

0.540

0.535

0.530

0.525

0.520

0.515

VOL & O.I.

50000

40000

30000

20000

10000

15 22 29 5 12 19 26 2 9 16 23 30 7 14 21 28 4 11 18 25 2 9 16 23 30 6 13 20 27 3 10 17 24 3 10

JUL-02

AUG

SEP

OCT

NOV

DEC

JAN-03

FEB

AUSTRALIAN DOLLAR (E) - IMM

AS OF:02/28/03

MARCH 2003

EXP 03/17/03

EACH GRID = 0.0025
VALUE = \$250

U.S. \$

0.615

0.610

0.605

0.600

0.595

0.590

0.585

0.580

0.575

0.570

0.565

0.560

0.555

0.550

0.545

0.540

0.535

0.530

0.525

0.520

VOL & O.I.

2500

2000

1500

1000

500

15 22 29 5 12 19 26 2 9 16 23 30 7 14 21 28 4 11 18 25 2 9 16 23 30 6 13 20 27 3 10 17 24 3 10
JUL-02 AUG SEP OCT NOV DEC JAN-03 FEB

AS OF:02/28/03

NEW ZEALAND DOLLAR - IMM

MARCH 2003

EXP 03/17/03

EACH GRID = 0.0050
VALUE = \$500.

U.S. \$

0.61

0.60

0.59

0.58

0.57

0.56

0.55

0.54

0.53

0.52

0.51

0.50

0.49

0.48

0.47

0.46

0.45

0.44

0.43

0.42

VOL & O.I.

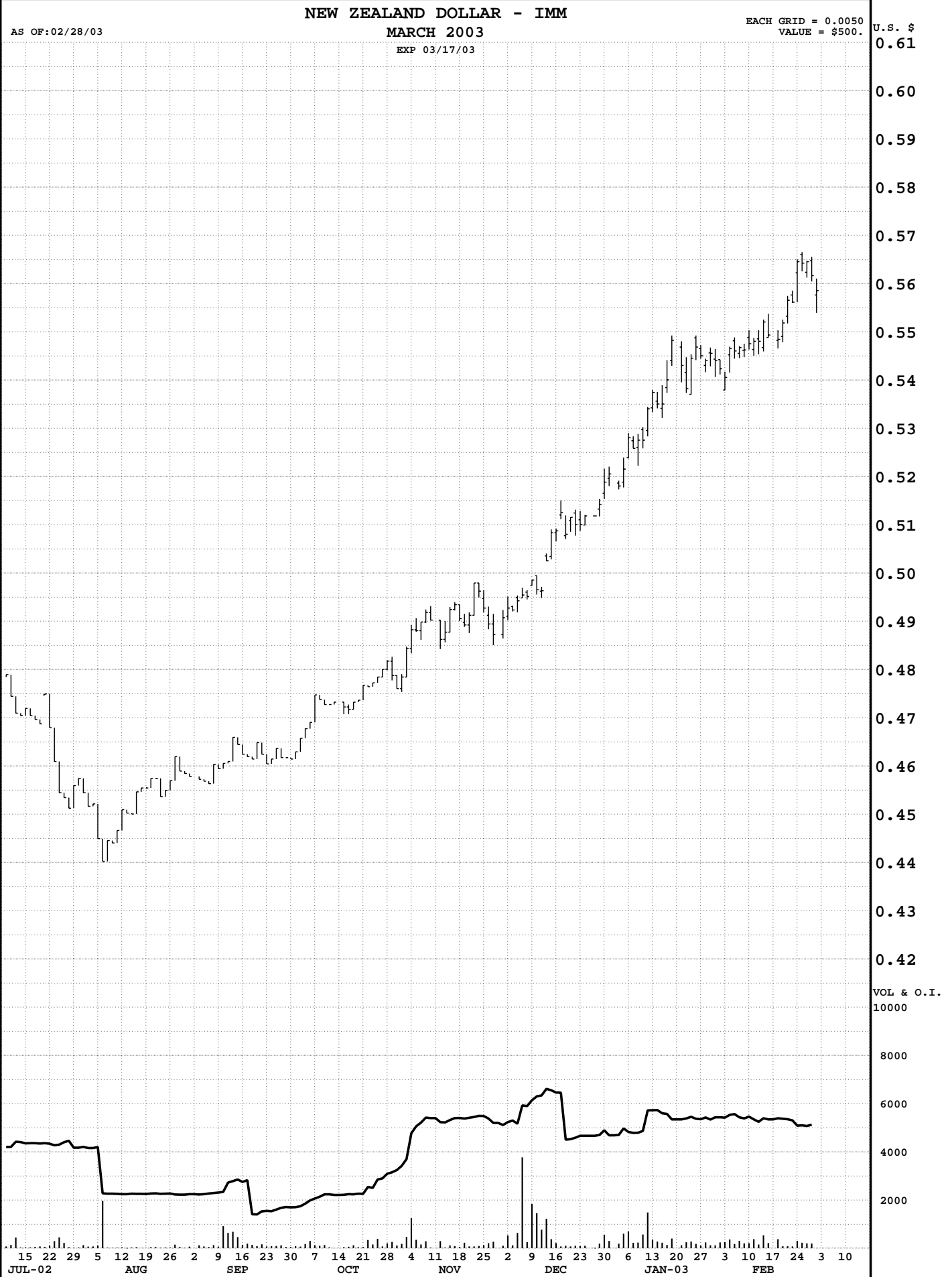
10000

8000

6000

4000

2000



NEW ZEALAND (E) - IMM

AS OF:02/28/03

MARCH 2003

EXP 03/17/03

EACH GRID = 0.0050
VALUE = \$500.

U.S. \$

0.61

0.60

0.59

0.58

0.57

0.56

0.55

0.54

0.53

0.52

0.51

0.50

0.49

0.48

0.47

0.46

0.45

0.44

0.43

0.42

VOL & O.I.

100

80

60

40

20

15 22 29 5 12 19 26 2 9 16 23 30 7 14 21 28 4 11 18 25 2 9 16 23 30 6 13 20 27 3 10 17 24 3 10
JUL-02 AUG SEP OCT NOV DEC JAN-03 FEB

AS OF: 02/28/03

MEXICAN PESO - IMM

MARCH 2003

EXP 03/17/03

EACH GRID = 0.0002

VALUE = \$125.

U.S. \$

0.0995

0.0990

0.0985

0.0980

0.0975

0.0970

0.0965

0.0960

0.0955

0.0950

0.0945

0.0940

0.0935

0.0930

0.0925

0.0920

0.0915

0.0910

0.0905

0.0900

VOL & O.I.

50000

40000

30000

20000

10000



15 22 29 5 12 19 26 2 9 16 23 30 7 14 21 28 4 11 18 25 2 9 16 23 30 6 13 20 27 3 10 17 24 3 10
JUL-02 AUG SEP OCT NOV DEC JAN-03 FEB

MEXICAN PESO - IMM

AS OF:02/28/03

MARCH 2003

EXP 03/17/03

EACH GRID = 0.0005
VALUE = \$250.

U.S. \$

0.104

0.103

0.102

0.101

0.100

0.099

0.098

0.097

0.096

0.095

0.094

0.093

0.092

0.091

0.090

0.089

0.088

0.087

0.086

0.085

VOL & O.I.

2500

2000

1500

1000

500

15 22 29 5 12 19 26 2 9 16 23 30 7 14 21 28 4 11 18 25 2 9 16 23 30 6 13 20 27 3 10 17 24 3 10
JUL-02 AUG SEP OCT NOV DEC JAN-03 FEB

BRITISH POUND/JAPANESE YEN - FINEX

AS OF:02/28/03

MARCH 2003

EXP 03/17/03

JPY/GBP

206

204

202

200

198

196

194

192

190

188

186

184

182

180

178

176

174

172

170

168

VOL & O.I.

5000

4000

3000

2000

1000

15 22 29 5 12 19 26 2 9 16 23 30 7 14 21 28 4 11 18 25 2 9 16 23 30 6 13 20 27 3 10 17 24 3 10
JUL-02 AUG SEP OCT NOV DEC JAN-03 FEB

EURO/BRITISH POUND - FINEX

AS OF:02/28/03

MARCH 2003

EXP 03/17/03

GBP/EURO

0.710

0.705

0.700

0.695

0.690

0.685

0.680

0.675

0.670

0.665

0.660

0.655

0.650

0.645

0.640

0.635

0.630

0.625

0.620

0.615

VOL & O.I.

10000

8000

6000

4000

2000

15 22 29 5 12 19 26 2 9 16 23 30 7 14 21 28 4 11 18 25 2 9 16 23 30 6 13 20 27 3 10 17 24 3 10
JUL-02 AUG SEP OCT NOV DEC JAN-03 FEB

EURO/JAPANESE YEN - FINEX

AS OF:02/28/03

MARCH 2003

EXP 03/17/03

YEN/EURO

132

131

130

129

128

127

126

125

124

123

122

121

120

119

118

117

116

115

114

113

VOL & O.I.

25000

20000

15000

10000

5000

15 22 29 5 12 19 26 2 9 16 23 30 7 14 21 28 4 11 18 25 2 9 16 23 30 6 13 20 27 3 10 17 24 3 10
JUL-02 AUG SEP OCT NOV DEC JAN-03 FEB

EURO/SWISS FRANC - FINEX

AS OF:02/28/03

MARCH 2003

EXP 03/17/03

CRF/EURO

1.4725

1.4700

1.4675

1.4650

1.4625

1.4600

1.4575

1.4550

1.4525

1.4500

1.4475

1.4450

1.4425

1.4400

1.4375

1.4350

1.4325

1.4300

1.4275

1.4250

VOL & O.I.

10000

8000

6000

4000

2000

15 22 29 5 12 19 26 2 9 16 23 30 7 14 21 28 4 11 18 25 2 9 16 23 30 6 13 20 27 3 10 17 24 3 10
JUL-02 AUG SEP OCT NOV DEC JAN-03 FEB